

PRODUCT CATALOGUE

GB | GLOBAL
BATTERIES

INDEX

<i>Global Batteries Ltd.</i>	2
QUALITY CERTIFICATES	3
PRODUCTS	4
START-STOP AGM	6
START-STOP EFB	10
FORMULA	16
FORMULA HEAVY DUTY	20
SUPR A HEAVY DUTY	28
CARAVAN & BOAT	30
SUPR A HEAVY DUTY	31
SUPER SPECIAL BUS	31
STORAGE & INSTALLATION	32
HEALTH & SAFETY	33
LAYOUT	34
TERMINAL TYPE	35
PRODUCT RANGE	36



Global Batteries Ltd.

We transform the lives and technology.
We continue dreaming and realising our dreams
We believe that we can change the future by staying young and
powerful. We have lifelong energy.



Global Batteries Ltd. products are specially designed to provide long life even under tough weather and road conditions. With its powerful R&D team and innovative company culture, while compensating today's requirements at the highest level, Global Batteries Ltd. also improves itself continuously to meet the requirements of the future technologies. Global Batteries Ltd. provides problem-free use and saving for consumers with its long-lasting products. Global Batteries Ltd. batteries are enduring and never let you down, even in difficult conditions.

ISO TS 16949, ISO 14001, ISO 9001,



TS EN 50342-1, ISO 18001, ISO 10002, ISO 50001 EnYS

PRODUCTS

Cars and Light Commercial Vehicles

- Start-Stop AGM
- NanoGold Start-Stop EFB
- Formul A

Heavy Duty Vehicles

- Formul A Super Heavy Duty
- Formul A Heavy Duty
- Supr A Heavy Duty

Special Vehicles

- Bus
- Tank

Caravan and Boats



Start-Stop AGM



Global Batteries Ltd. AGM batteries, with its unique performance, agility and fast charge acceptance are specially designed for top segment Start-Stop vehicles with regenerative braking systems.

What is regenerative braking system?

Regenerative braking system is a technology that converts the kinetic energy into electrical energy produced during the braking of the car.

To meet the high energy needs of the new generation vehicles that uses Start-Stop regenerative braking system, Global Batteries Ltd. AGM (Absorbent Glass Mat) batteries have maximum leak proof with glass fiber separators, 3,5 times more cycle life, %30 percent higher CCA and fast charge acceptance compared to a standard lead acid battery.

Technical Specifications:

- PbSn-PbCa Full Frame Plates
- Special paste on grids
- External Wall Box with reinforced polypropylene (PP)
- Glass Fiber Separators
- Flame arresters inside the lid
- Special valve plugs special to AGM technology

Advantages

- Maintenance-Free, safe and long life
- High corrosion resistance and minimum short circuit risks
- 3,5 times more cycle life compared to standard lead acid batteries
- 30% higher cold cranking power (CCA) compared to standard lead acid batteries
- Maximum leak proof thanks to acid absorption in special separators
- Minimum water loss thanks to special valve plugs



AGM TECHNOLOGY

Start-StopAGM

Start-StopAGM



Start-StopEFB



FORMULA



Recommended Fields of Use

Vehicles with regenerative braking system and luxury cars

Start-Stop vehicles w/o regenerative braking system

All vehicles (except Start-Stop vehicles and Luxury class cars)

CCA

30% Higher CCA *

15% Higher CCA *

10% Higher CCA *

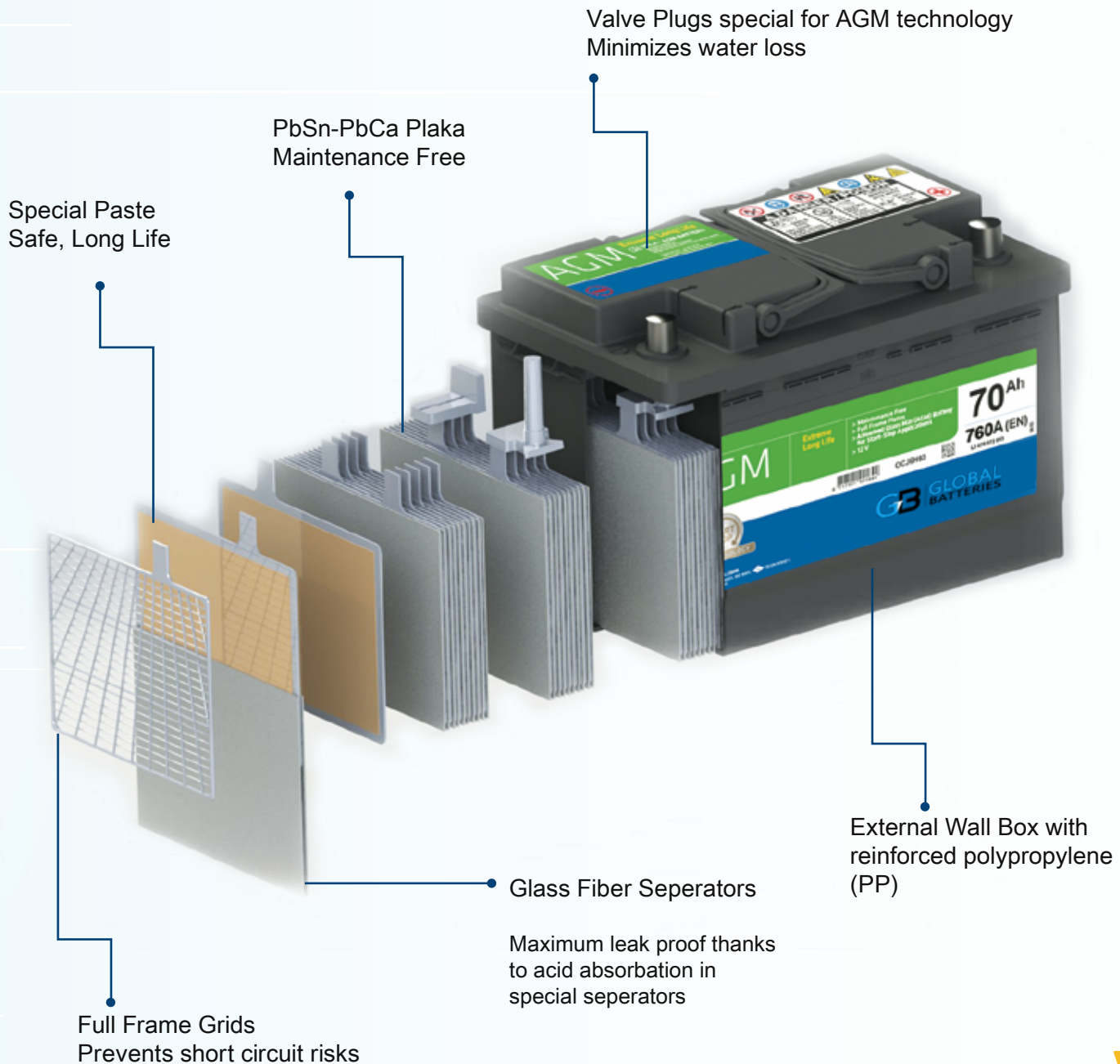
Cycle Life

3,5 times longer life *

2,5 times longer life *

1,5 times longer life *

* Compared to standart lead acid batteries



NANOGOLD Start-Stop EFB



Global Batteries Ltd. NanoGold Start-Stop EFB has been specially designed for top segment and standard Start-Stop vehicles.

In addition to its reinforced high-quality plates, it provides maintenance free extra long-life and extra performance even for new generation vehicles with high electricity consumption thanks to its special paste formula with Nano Crystal Technology.

What is Start-Stop Technology?

Start-Stop system automatically shuts down the engine while your vehicle is idle during heavy traffic or at traffic lights and then restarts the engine when the driver engages the clutch, thus helping to prevent loss of energy.

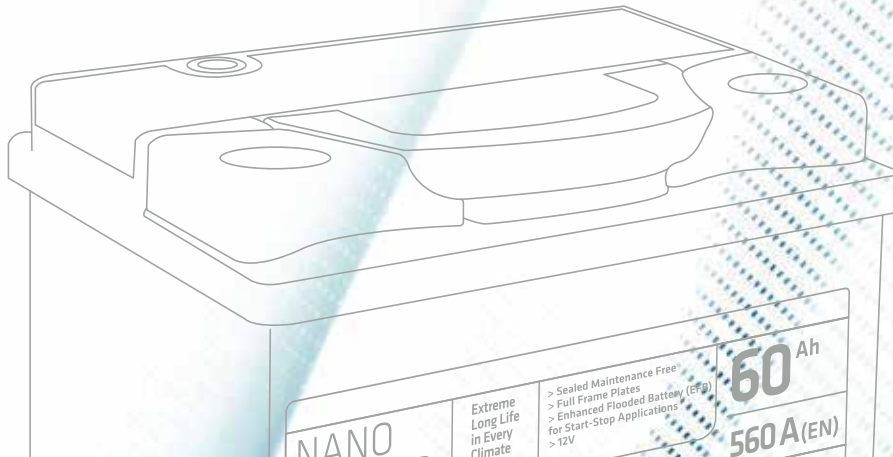
Micro-hybrid in other words Start-Stop is a technology offering great advantage in urban traffic like:

- Fuel saving
- Reduced CO2 emission rates.

The principle of Micro-hybrid (Start-Stop) idea is avoiding combustion of fuel when there is no need for fuel. Quantity of fuel consumed for starting the engine and 0,7 second of idling is same in either case. In case of idling more than 0,7 second, this technology will ensure a fuel saving of up to 10% in vehicles with regenerative braking system and up to 5% in other vehicles.



EFB TECHNOLOGY



Technical Features:

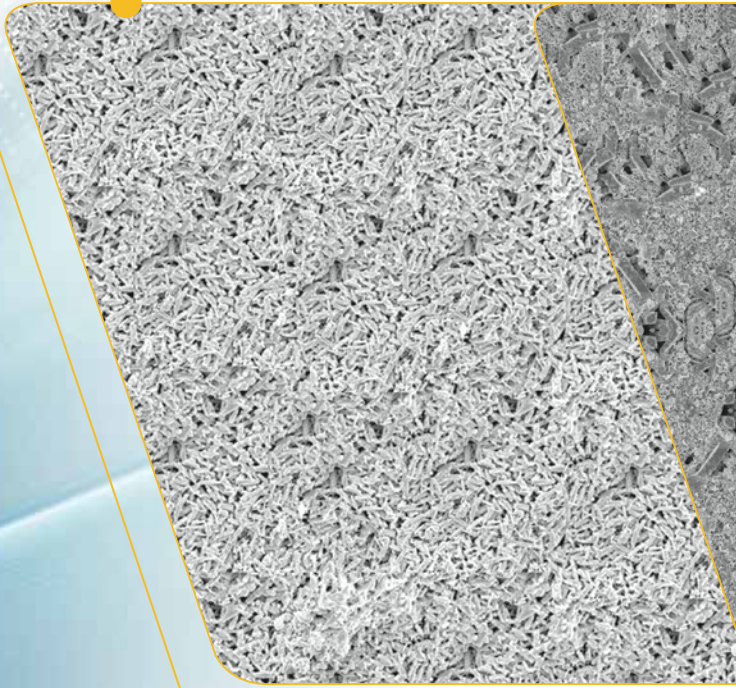
- Totally sealed double-lid Patented design which meets most challenging leak-proof requirements and passed 180° roll-over test.
 - Special labyrinth plugs
 - Flame arresters inside the lid
 - Charge level indicator on the lid
 - Special terminal covers and user friendly handle
- Full-frame positive plates
- Special separators with low internal resistance
- Special paste formula prepared by using Nano Crystal Technology
- Special alloy with improved corrosion-resistance at higher temperatures
- Maximum acid reserve capacity over the plates

Advantages:

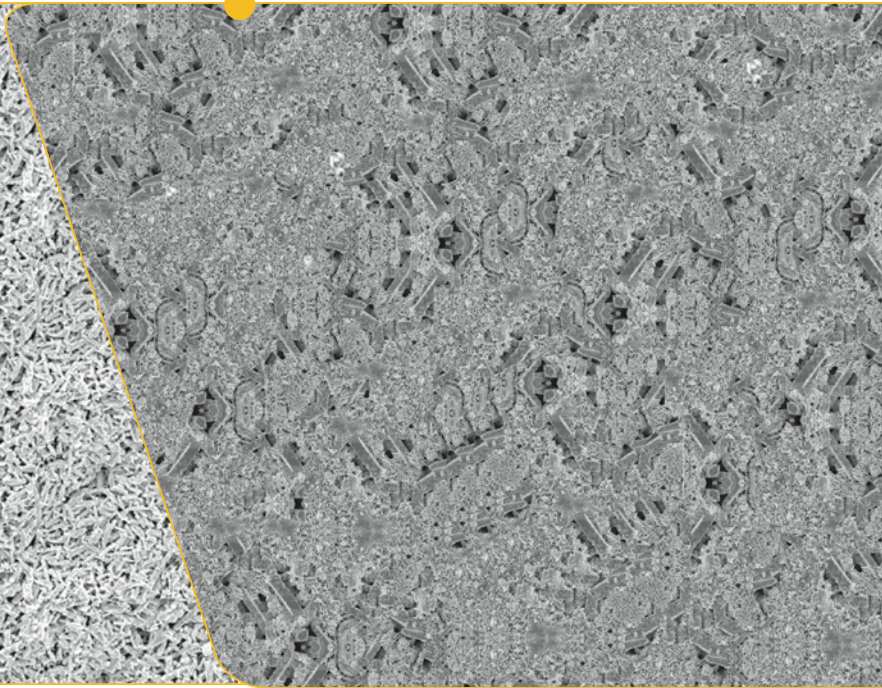
- Ready-to-use, totally maintenance-free
- More safe with flame arresters
- 2,5 times more cycle life compared to standard lead-acid batteries
- 15% more starting power than the standard batteries

NANOCRYSTAL TECHNOLOGY

NANOCRYSTAL



STANDARD



- The paste produced through a special process ensures a homogeneous structural dispersal, increased active material adhesion to the grid, and 2,5 times more cycle life compared to standard lead acid batteries.
- It offers high performance with perfect crystal structure formation and porous paste structure by addition of special chemical materials

FULL FRAME CAST GRIDS

- Resistant special-alloy lead enabling corrosion resistance at high temperatures
- Minimum loss of water thanks to its special alloy
- Minimum self-discharge
- Special grid design ensuring maximum passage of current and high starting power
- Thicker grids

SPECIAL SEPARATORS

Optimized special separators used for plates:

- Maximum hold of active material
- Minimized short-circuit risk
- Reduced electrical internal resistance to provide higher starting power
- Advanced structure ensuring loss of water 20% less than that of standard batteries
- 40% greater oxidation resistance

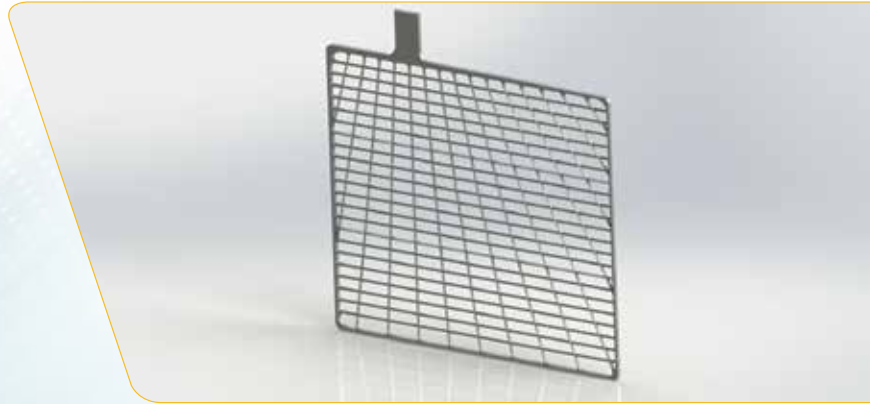
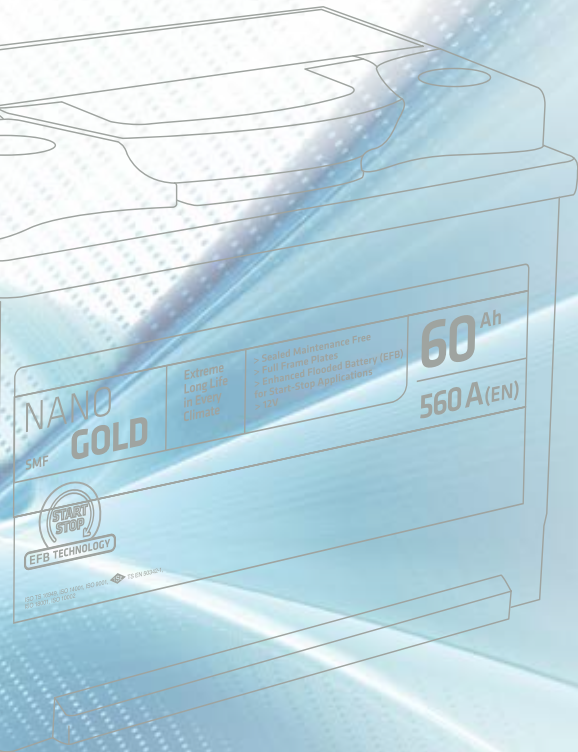
MAXIMUM ACID RESERVE CAPACITY

Optimized design provides more acid reserve capacity over the plates in the box.

High acid reserve capacity:

- Reduces corrosion
- Provides longer life
- Improves battery performance





Acid Level

Plate Level



FORMULA

Technology



Global Batteries Ltd. Formul A Series have a wide product range from A-segment small vehicles to E-segment vehicles with high electrical equipment. Formul A, the primary choice of vehicle manufacturers, is specially designed to meet and even go beyond all requirements of modern-day vehicles.

TOTALLY MAINTENANCE-FREE

Global Batteries Ltd. Formul A provides durable energy to your car. It employs advanced technology which does not require maintenance. It provides high starting power and problem-free operation.

SEALED LID



- Lid system consists of two special parts connected through heating process.
- Each battery cell incorporates specially produced labyrinth plugs, which are mounted between two parts of the lid.
- These special plugs and lid:
 - prevent acid leak
 - provide flame arresting for the risk of explosion
 - minimize water loss
 - meet requirements of tilting, oscillation and vibration tests

Technical Features:

- Fully sealed double-lid
Patented design which meets most challenging leak-proof requirements, and passed 180° roll-over test.
 - Special labyrinth plugs
 - Flame arresters inside the lid
 - Charge level indicator on the lid
 - Special terminal covers and user friendly handle
- Ca-Ca silver tin alloy plates
- Polyethylene envelope separators preventing short-circuit

Advantages:

- Ready-to-use, totally maintenance-free
- More safe with flame arresters
- Improved cycle life
- Higher Ah and starting capacity
- Wide product range compatible with vehicles from small cars to new generation gasoline and diesel powered cars.



FORMUL A HEAVY DUTY

endurance

WHAT IS SUPER HEAVY DUTY?

Super Heavy Duty Series car batteries incorporate glassmat separators in addition to its reinforced plates. Thanks to these special separators, cycle life and vibration resistance of batteries are longer and greater than regular batteries. Super Heavy Duty batteries with low internal resistance provide extra performance even under most challenging road conditions and at very low temperatures.



Developed by Global Batteries Ltd. engineers, specially designed heavy vehicle series satisfying requirements and needs of heavy duty vehicle drivers: **FORMUL A HEAVY DUTY**

WHY TOTALLY SEALED LID?

Water evaporating in the battery condenses on the plugs and second lid. Specially designed plugs ensure safe return of the water to the battery, thus preventing water loss and leak.

EXTRA RESISTANCE AGAINST VIBRATION

Specially designed thicker plates provide maximum resistance against effects of corrosion. The positive electrode incorporates silver, tin and calcium alloy (PbCaAg) while the negative electrode incorporates calcium (PbCa), thus ensuring minimum loss of water.

FORMUL A HEAVY DUTY



Technical Features:

- Fully sealed double-lid Patented design which meets most challenging leak-proof requirements.
 - Special labyrinth plugs
 - Flame arresters inside the lid
 - Charge level indicator on the lid
 - Special handle
- Ca-Ca silver tin alloy plates (PbCaAg-PbCa)
- Glassmate separators in Super Heavy Duty Series
- Thicker construction inside the terminals
- High acid reserve capacity above the plates

Advantages:

- Ready-to-use, totally maintenance-free
- Extra resistance against vibration
- Improved cycle life
- Higher Ah and starting capacity
- Very low water consumption (1 gr/Ah - TS EN 50342-1)

100% LEAK-PROOF

Innovative lid guarantees 100% leak-proof.



TWO-SIDE DEGASSING

Two-side degassing ensures safe discharge of gas produced in the battery without any gas explosion risk.



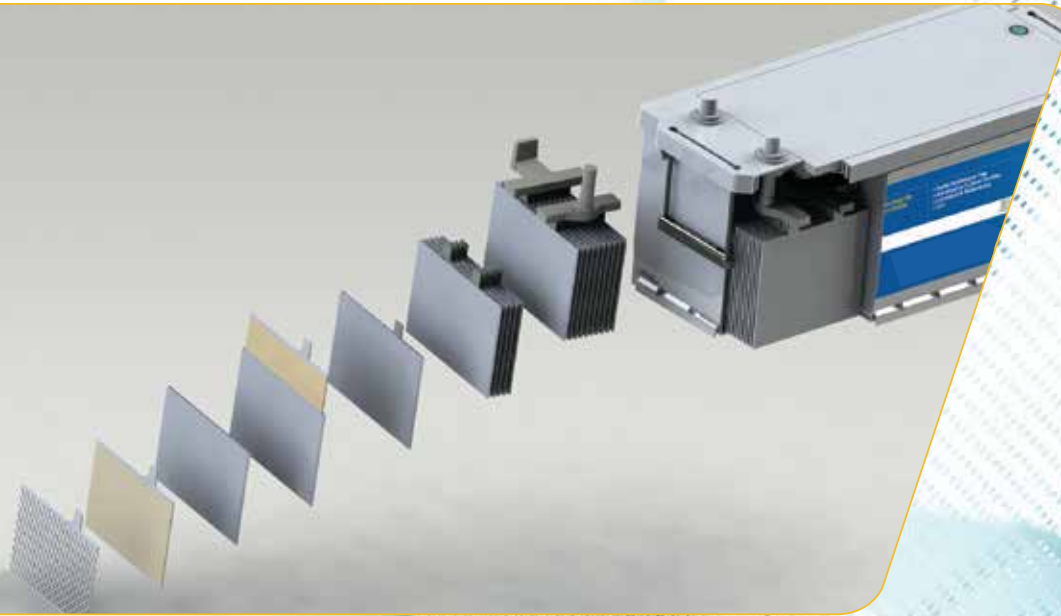
MORE SAFE WITH FLAME ARRESTERS

Flame arresters mounted inside the lid offer protection against arcs and flames.



TECHNICAL FEATURES

SILVER AND CALCIUM ALLOY TECHNOLOGY



- Specially designed thicker plates provide maximum resistance against effects of corrosion.
- The positive electrode incorporates silver and the negative electrode incorporates calcium, thus ensuring minimum loss of water.



LABYRINTH PLUGS

Specially designed for preventing leakage caused by tough field conditions which lead to vibration, and for ensuring re-condensation of water evaporated at high temperatures

TECHNICAL FEATURES

MAXIMUM ACID RESERVE CAPACITY

- Box design has been changed to increase the acid volume in the battery, thus minimizing any possible corrosion effects.
- Increased acid reserve capacity ensures higher battery performance at higher temperatures.



THICKER CONSTRUCTION INSIDE THE TERMINALS

- The thicker construction inside the terminals improves the strength under challenging field conditions, and help to reduce negative effects of vibration.



FIELDS OF USE



TRUCKS AND ARTICULATED LORRIES

- Trucks and articulated-lorries which cover long distances daily require a battery providing full-performance. Only batteries with extra power and durability can meet electric demands of the devices incorporated to such vehicles such as navigation units, TV, DVD, etc.
- Moreover, such vehicles require a battery providing high starting power for a problem-free start after long breaks. Long-distances, utilization of electrical devices during breaks, irregular charge-discharge intervals are only possible with batteries having long cycle life.
Super Heavy Duty Series are specially recommended.



DELIVERY VEHICLES

Delivery vehicles used for transportation of loads need the aid of a powerful battery for avoiding any breakdowns during transport, as well as ensuring timely deliveries and problem-free, smooth operation during loading and unloading.



BUSES

Today, intercity buses are equipped with many technological facilities. During transport of passengers to relevant destinations, they provide comfort items such as TV, USB, wireless internet, electric outlets in front of seats. When providing such facilities for comfort, they need superior performance batteries.
Super Heavy Duty Series are specially recommended.

MUNICIPAL SERVICE VEHICLES

Public vehicles used for public services such as fire trucks, refuse lorries, and municipality public transport buses, etc. need batteries with superior performance and durability for providing smooth problem-free service under the most challenging conditions.



CONSTRUCTION VEHICLES

Construction equipment expected to operate under most challenging weather and road conditions need batteries offering high-durability in order to be ready anytime for the new duty.



AGRICULTURAL VEHICLES

Agricultural vehicles which are required to provide high-performance under intensive operation tempo can provide problem-free and uninterrupted service with the aid of a powerful battery.



SUPR A HEAVY DUTY



Supr A Heavy Duty

Global Batteries Ltd. Supr A series are designed to meet all requirements and needs of standard vehicles which do not incorporate advanced electrical equipments.

Super Calcium Alloy Plates

In Supr A Heavy Duty batteries, negative plates are made of calcium while positive plates are made of antimony. Hybrid technology is involved to provide high performance. Resistant against vibration. Supr A Heavy Duty Series always stand by you with the wide-ranging product portfolio compatible with all commercial vehicles.

Technical Features::

- Calcium alloy plates
- Polyethylene envelope separator
- Maintenance-free
- High acid reserve capacity
- High charge-discharge cycle



Long-lasting

Supr A Heavy Duty products are long-lasting just like other Global Batteries Ltd. products. Ready-to-use, and maintenance-free under normal conditions

Advantages:

- Ready-to-use
- Maintenance-free under normal conditions
- Resistant under challenging weather and road conditions
- High starting power

CARAVAN & BOAT



Global Batteries Ltd. Caravan and Boat batteries are specially designed for providing extra resistance against shocks and surges, and minimizing loss of water provide maximum-performance with plates specifically reinforced for boats and caravans, ensuring high starting power. These batteries are also strengthened to support extra equipments

Technical Features:

- Hybrid plates specifically reinforced for use in caravan and boats
- Specially designed plates and separators
- Special acid compound
- High starting power and capacity

Advantages:

- Maximum charge-discharge cycle
- Maximum performance
- Extra resistance against shocks and surges
- More safe thanks to simple degassing feature.

SUPR A HEAVY DUTY SUPER SPECIAL BUS



SUPERSPECIALBUS

Global Batteries Ltd. Super Special Bus Series batteries are specially designed for buses. They are long-lasting just like the rest of Global Batteries Ltd. products. Super Special Bus are ready-to-use and maintenance-free under normal conditions.

In Super Special Bus Series batteries, negative plates are made of calcium while positive plates are made of antimony. Hybrid technology is involved to provide high performance.

Technical Features:

- Calcium alloy plates
- Polyethylene envelope separators
- High charge-discharge cycle
- High acid reserve capacity above the plates

Advantages:

- Ready-to-use
- Maintenance-free under normal conditions
- High starting power
- Resistance under weather conditions

STORAGE AND INSTALLATION



WET BATTERIES

Always store in a dry and cool place in the upright position. (10°C to 25°C). Place batteries on a wood pallet for avoiding direct contact with concrete ground.

A) CHECK THE CHARGE LEVEL OF YOUR BATTERY PERIODICALLY (EVERY 3 MONTHS)

- 1) Charge level of the battery must be greater than 12,6V before sale.
- 2) During storage, the minimum voltage must be 12,4V. Otherwise, any lower voltage rate will result in sulphating of plates leading to reduced battery performance. For preventing any permanent damage, unpack the battery and charge at 16,1V and 1/20Cn current (1/20 of Ampere rate) without undue delay.

B) EMPLOY FIFO (FIRST-IN FIRST-OUT) METHOD FOR YOUR INVENTORIES

The first batteries entered into the inventory are the first ones to be sold. Please check that the battery ensures the conditions specified in Article A.

C) BATTERY INSTALLATION

- 1) Before installation, make sure that battery to be installed in your car is correct by referring to operating manual of your car.
- 2) Make sure that the engine is switched off.
- 3) Remove the old battery first by releasing from the negative terminal cable, and then the positive terminal cable.
- 4) When the vehicle engine is off, conduct a short-circuit control to make sure whether there is any electric consumption (conduct a leakage test).
- 5) Clean the battery compartment and terminal connections by using a brush, and replace them if necessary.
- 6) Install the new battery. Avoid tightening the bottom connections too tight. Before performing the connection, check the polarity starting from the positive cable. Clean the terminals using vaseline. Negative cable must always be connected in the end. Tighten the connections so that they are not loose.
- 7) When the engine is on, check the compatibility of charge current by controlling the voltage at battery terminals. After installing the new battery in your car, gear up the vehicle in order to check whether the alternator voltage output rate specified in vehicle manual is compatible with the electric system.

HEALTH AND SAFETY



Sulphuric acid in the battery is very harmful.

Measures:

- Always carry the batteries carefully.
- Always keep in the upright position.
- Charge in a well-ventilated place.

Do not add extra quantities of pure water. (Pure water level must not be more than 1.5 cm above the plates.) During battery maintenance (addition of water, cleaning, battery charge), absolutely wear protective goggles suitable with working conditions.

In case of any possible acid splash risk, wear protective clothing.

Emergency:

- In case of contact with eyes or skin wash with plenty of water.
- Immediately remove contaminated clothing.
- Ingestion: Drink plenty of water and milk. Consult a physician.
- Spill: Wash small-spills with water.
- Operating batteries emit highly flammable hydrogen and oxygen gases.
- Do not smoke or avoid any sources and acts which may cause sparks near batteries which are being charged, operating on the vehicle, or stopped after a long operation period. Keep fire away.
- Use all devices with great care.



SHORT CODE

LB1 040 036 013

A B C D

A: Battery Box Type

B: Ah

C: CCA (EN) (with 2 stages)

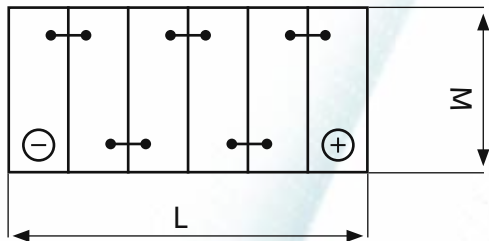
D: First stage: Layout

Second Stage: Terminal Type

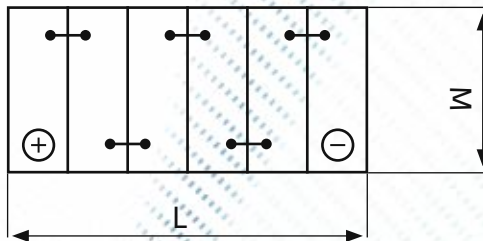
Third Stage: Holddown

LAYOUT

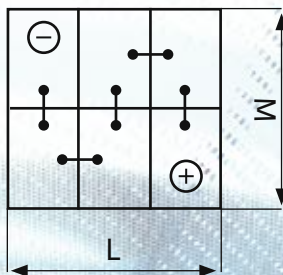
LAYOUT 0



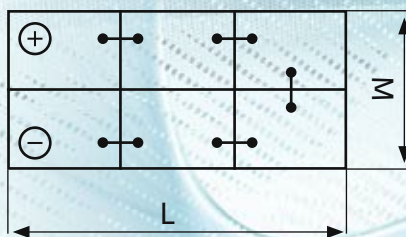
LAYOUT 1



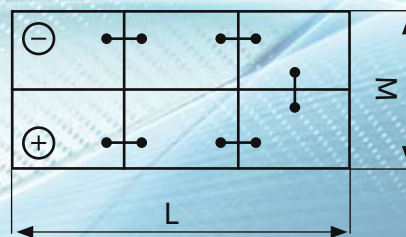
LAYOUT 2



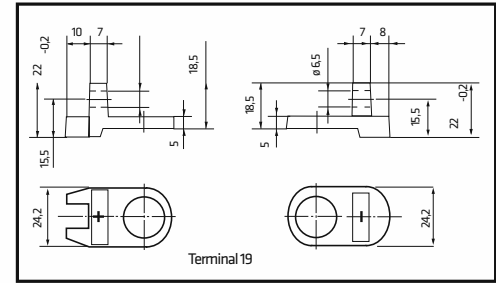
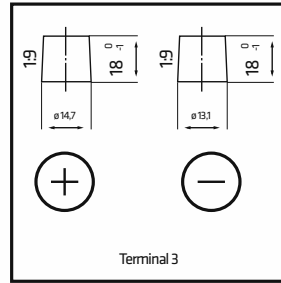
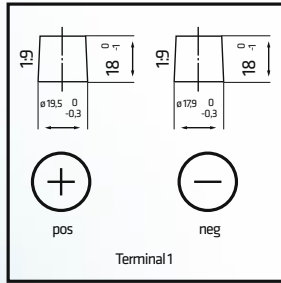
LAYOUT 3



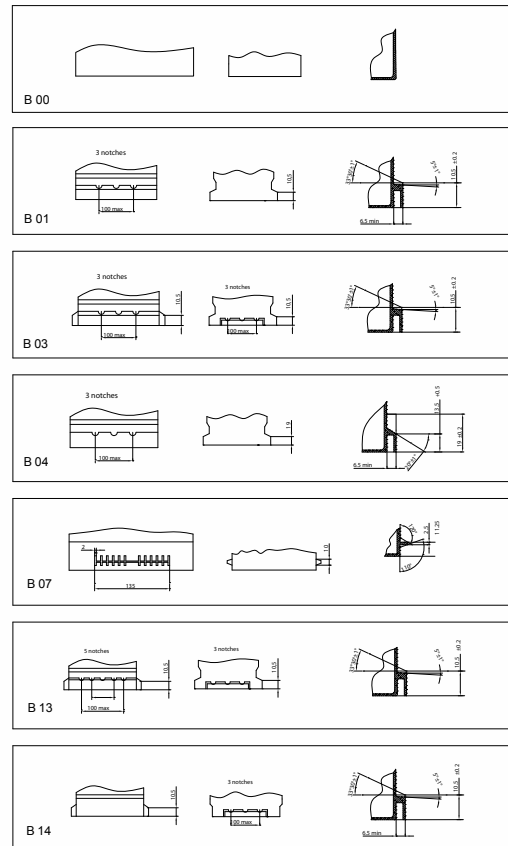
LAYOUT 4



TERMINAL TYPE



HOLDDOWN TYPE



PRODUCT RANGE

BOX TYPE	SHORT CODE	VOLT	C20 (Ah)	CCA (A-EN)	LAYOUT / TERMINAL	HOLDDOWN	DIMENSION (LENGTH X WIDTH X HEIGHT mm)	MAX WEIGHT (KG)
NANOGOLD START-STOP EFB								
L3	AGM L3 070 076 013	12	70	760	0/1	B13	278x175x190	21,2
L5	AGM L5 092 085 013	12	92	850	0/1	B13	352x175x190	26,1
NANOGOLD START-STOP EFB								
LB2	LB2 060 056 013	12	60	560	0/1	B13	242x175x175	15,9
L2	L2 060 056 013	12	60	560	0/1	B13	242x175x190	16,5
LB3	LB3 065 065 013	12	65	650	0/1	B13	278x175x175	17,5
L3	L3 072 068 013	12	72	680	0/1	B13	278x175x190	19,9
LB4	LB4 075 073 013	12	75	730	0/1	B13	315x175x175	20,5
L4	L4 080 073 013	12	80	730	0/1	B13	315x175x190	21,4
L5	L5 090 083 013	12	90	830	0/1	B13	352x175x190	23,9
L5	L5 100 092 013	12	100	920	0/1	B13	352x175x190	24,9
FORMUL A								
L0	L0 040 033 013	12	40	330	0/1	B13	175x175x190	9,6
L1B	L1B 036 030 013	12	36	300	0/1	B13	207x175x175	10,6
L1B	L1B 044 036 013	12	44	360	0/1	B13	207x175x175	10,9
L1B	L1B 044 036 113	12	44	360	1/1	B13	207x175x175	10,9
L1B	L1B 046 040 013	12	46	400	0/1	B13	207x175x175	11,2
L1B	L1B 050 042 013	12	50	420	0/1	B13	207x175x175	11,8
L1	L1 044 036 013	12	44	360	0/1	B13	207x175x190	11,4
L1	L1 044 036 113	12	44	360	1/1	B13	207x175x190	11,4
L1	L1 046 040 013	12	46	400	0/1	B13	207x175x190	11,7
L1	L1 050 042 013	12	50	420	0/1	B13	207x175x190	12,2
L1	L1 052 046 013	12	52	460	0/1	B13	207x175x190	12,6
LB2	LB2 045 040 013	12	45	400	0/1	B13	242x175x175	12,6
LB2	LB2 055 046 013	12	55	460	0/1	B13	242x175x175	13
LB2	LB2 060 049 013	12	60	490	0/1	B13	242x175x175	13,7
LB2	LB2 062 054 013	12	62	540	0/1	B13	242x175x175	14
L2	L2 050 042 013	12	50	420	0/1	B13	242x175x190	13,3
L2	L2 055 046 013	12	55	460	0/1	B13	242x175x190	13,7
L2	L2 055 046 113	12	55	460	1/1	B13	242x175x190	13,6
L2	L2 060 049 013	12	60	490	0/1	B13	242x175x190	14,2
L2	L2 060 049 113	12	60	490	1/1	B13	242x175x190	14
L2	L2 062 054 013	12	62	540	0/1	B13	242x175x190	14,6
L2	L2 062 054 113	12	62	540	1/1	B13	242x175x190	14,3
LB3	LB3 060 052 013	12	60	520	0/1	B13	278x175x175	17,3
LB3	LB3 066 060 013	12	66	600	0/1	B13	278x175x175	16,1
LB3	LB3 070 064 013	12	70	640	0/1	B13	278x175x175	16,1
LB3	LB3 072 070 013	12	72	700	0/1	B13	278x175x175	16,7
LB3	LB3 072 070 113	12	72	700	1/1	B13	278x175x175	16,7
L3	L3 066 060 013	12	66	600	0/1	B13	278x175x190	16,2
L3	L3 072 068 013	12	72	680	0/1	B13	278x175x190	17,3
L3	L3 072 068 011	12	72	680	0/1	B01	278x175x190	17,2

BOX TYPE	SHORT CODE	VOLT	C20 (Ah)	CCA (A-EN)	LAYOUT / TERMINAL	HOLDDOWN	DIMENSION (LENGTH X WIDTH X HEIGHT mm)	MAX WEIGHT (KG)
----------	------------	------	----------	------------	-------------------	----------	--	-----------------

FORMUL A								
L3	L3 075 070 013	12	75	700	0/1	B13	278x175x190	17,6
L3	L3 075 070 011	12	75	700	0/1	B01	278x175x190	17,6
L3	L3 075 070 113	12	75	700	1/1	B13	278x175x190	17,6
LB4	LB4 082 074 013	12	82	740	0/1	B13	315x175x175	18,2
L4	L4 082 074 013	12	82	740	0/1	B13	315x175x190	18,9
LB5	LB5 088 076 013	12	88	760	0/1	B13	353x175x175	20,4
L5	L5 088 072 013	12	88	720	0/1	B13	353x175x190	21,9
L5	L5 090 076 013	12	90	760	0/1	B13	353x175x190	21,6
L5	L5 100 086 013	12	100	860	0/1	B13	353x175x190	23

BOX TYPE	SHORT CODE	VOLT	C20 (Ah)	CCA (A-SAE)	LAYOUT / TERMINAL	HOLDDOWN	DIMENSION (LENGTH X WIDTH X HEIGHT mm)	MAX WEIGHT (KG)
----------	------------	------	----------	-------------	-------------------	----------	--	-----------------

FORMUL A ASIA								
NS40	NS40 035 030 030-40B19L-NS40 ZL	12	35	300	0/3	B00	197x129x224	9,3
NS40	NS40 035 030 130-40B19R-NS40 Z	12	35	300	1/3	B00	197x129x224	9,3
NS40	NS40 035 030 030- 40B19L-NS40 ZL	12	35	300	0/3 (with t. cover)	B00	197x129x224	9,3
NS40	NS40 035 030 110-40B19RS-NS40ZS	12	35	300	1/1	B00	197x129x224	9,3
NS40	NS40 035 030 031-40B19FL	12	35	300	0/3	B01	197x129x224	9,3
NS40	NS40 042 036 030-44B19L	12	42	360	0/3	B00	197x129x224	10,3
NS40	NS40 042 036 130-44B19R	12	42	360	1/3	B00	197x129x224	10,3
NS40	NS40 042 036 010-44B19LS	12	42	360	0/1	B00	197x129x224	10,3
NS40	NS40 042 036 130-44B19R	12	42	360	1/3	B00	197x129x224	10,3
NS40	NS40 042 036 031-44B19FL	12	42	360	0/3	B01	197x129x224	10,3
NS60	NS60 045 040 030-NX100-S6L-NS60L	12	45	400	0/3	B00	238x129x224	11,3
NS60	NS60 045 040 130-NX100-S6-NS60	12	45	400	1/3	B00	238x129x224	11,3
NS60	NS60 045 040 010-NX100-S6LS-NS60LS	12	45	400	0/1	B00	238x129x224	11,3
NS60	NS60 045 040 110-NX100-S6S-NS60S	12	45	400	1/1	B00	238x129x224	11,3
NS60	NS60 060 043 010	12	60	430	0/1	B00	238x129x224	12,8
NS60	NS60 060 043 110	12	60	430	1/1	B00	238x129x224	12,8
D20	D20 050 042 013-50D20L	12	50	420	0/1	B13	207x175x220	12,2
D20	D20 050 042 113-50D20R	12	50	420	1/1	B13	207x175x220	12,2
D23	D23 050 047 010-55D23L	12	50	470	0/1	B01	232x173x225	13
D23	D23 050 047 110-55D23R	12	50	470	1/1	B00	232x173x225	13
D23	D23 050 047 111	12	50	470	1/1	B01	232x173x225	13
D23	D23 060 054 010-75D23L	12	60	540	0/1	B00	232x173x225	14,1
D23	D23 060 054 011	12	60	540	0/1	B01	232x173x225	14,1
D23	D23 060 054 110-75D23L	12	60	540	1/1	B00	232x173x225	14,1
D23	D23 060 054 111	12	60	540	1/1	B01	232x173x225	14,1
D23	D23 068 058 011	12	68	600	0/1	B01	232x173x225	16,5
D23	D23 068 058 111	12	68	600	1/1	B01	232x173x225	16,5
D26	D26 050 042 017-48D26L-NS0L	12	50	420	0/1	B07	264x175x220	14,3
D26	D26 050 042 117-48D26R-NS0	12	50	420	1/1	B07	264x175x220	14,3
D26	D26 060 050 017-55D26L-NS0ZL	12	60	500	0/1	B07	264x175x220	15,4
D26	D26 060 050 117-55D26R-NS0Z	12	60	500	1/1	B07	264x175x220	15,4

PRODUCT RANGE

BOX TYPE	SHORT CODE	VOLT	C20 (Ah)	CCA (A-SAE)	LAYOUT / TERMINAL	HOLDDOWN	DIMENSION (LENGTH X WIDTH X HEIGHT mm)	MAX WEIGHT (KG)
FORMUL A ASIA								
D26	D26 066 050 017-75D26L-NS70L	12	66	500	0/1	B07	264x175x220	15,9
D26	D26 066 050 117-75D26R-NS70	12	66	500	1/1	B07	264x175x220	15,9
D26	D26 072 060 017-90D26L-NX110-5L	12	72	600	0/1	B07	264x175x220	16,5
D26	D26 072 060 117-90D26R - NX110-5	12	72	600	1/1	B07	264x175x220	16,5
D26	D26 075 060 017	12	75	600	0/1	B07	264x175x220	17
D26	D26 075 060 117	12	75	600	1/1	B07	264x175x220	17
D31	D31 070 060 011-65D31L-N70L	12	70	600	0/1	B01	306x175x224	18
D31	D31 070 060 111-65D31R - N70	12	70	600	1/1	B01	306x175x224	18
D31	D31 080 065 011-95D31L-N70ZL	12	80	650	0/1	B01	306x175x224	19,2
D31	D31 080 065 111-95D31R-N70Z	12	80	650	1/1	B01	306x175x224	19,2
D31	D31 090 075 011-105D31L-NX120-7L	12	90	750	0/1	B01	306x175x224	20
D31	D31 090 075 111-105D31R-NX120-7	12	90	750	1/1	B01	306x175x224	20
D31	D31 100 076 011-115D31L	12	100	760	0/1	B01	306x175x224	21,4
D31	D31 100 076 111 -115D31R	12	100	760	1/1	Rn1	306x175x224	21,4
FORMUL A Super Heavy Duty								
A	A 140 093 310	12	140	930	3/1	B00	513x189x220	36,1
B	B 180 100 310	12	180	1000	3/1	B00	513x223x218	45,7
C	C 225 115 310	12	225	1150	3/1	B00	514x274x235	58,8
C	C 240 120 310	12	240	1200	3/1	B00	514x274x235	60,8
FORMUL A Heavy Duty								
A	A 120 080 313	12	120	800	3/1	B03	513x189x218	34
A	A 135 088 313	12	135	880	3/1	B03	513x189x218	35,6
B	B 150 092 310	12	150	920	3/1	B00	513x223x218	42,5
B	B 180 100 310	12	180	1000	3/1	B00	513x223x218	45,5
B	B 180 100 313	12	180	1000	3/1	B03	513x223x218	45,5
B	B 190 110 310	12	190	1100	3/1	B00	513x223x218	46,1
B	B 190 110 313	12	190	1100	3/1	B03	513x223x218	46,1
C	C 200 105 310	12	200	1050	3/1	B00	514x274x235	56
C	C 225 115 310	12	225	1150	3/1	B00	514x274x235	58,8
SUPR A Heavy Duty								
TRCT L	TRCT L 105 070 011	12	105	700	0/1	B01	344x175x225	25,2
TRCT L	TRCT L 105 070 111	12	105	700	1/1	B01	344x175x225	25,2
TRCT L	TRCT L 115 076 010	12	115	760	0/1	B00	344x175x225	27
TRCT	TRCT 125 080 010	12	125	800	0/1	B00	344x173x275	29,4
A	A 120 080 313	12	120	800	3/1	B03	513x189x218	35
A	A 120 080 310	12	120	800	3/1	B00	513x189x218	35
A	A 135 088 313	12	135	880	3/1	B03	513x189x218	36,5
B	B 150 092 313	12	150	920	3/1	B03	513x223x218	42,6

BOX TYPE	SHORT CODE	VOLT	C20 (Ah)	CCA (A-EN)	LAYOUT / TERMINAL	HOLDDOWN	DIMENSION (LENGTH X WIDTH X HEIGHT mm)	MAX WEIGHT (KG)
SUPR A Heavy Duty								
B	B 165 100 313	12	165	1000	3/1	B03	513x223x218	44,4
B	B 180 110 310	12	180	1100	3/1	B00	513x223x218	45,5
B	B 180 110 313	12	180	1100	3/1	B03	513x223x218	45,5
C	C 200 105 310	12	200	1050	3/1	B00	514x274x235	55,7
C	C 225 115 310	12	225	1150	3/1	B00	514x274x235	58,4
SUPER SPECIAL								
BUS	C 210 110 310	12	210	1100	3/1	B00	514x274x235	57,2
BUS	C 240 120 310	12	240	1200	3/1	B00	513x274x235	60,6
TANK	TANK 100 072 210	12	100	720	2/1	B00	280x270x225	30,2
TANK	TANK 125 080 210	12	125	800	2/1	B00	280x270x225	32,7
CARAVAN & BOAT								
L1	L1 050 036 013	12	50	360	0/1	B13	207x175x190	13,2
L2	L2 060 046 013	12	60	460	0/1	B13	242x175x190	16,8
L3	L3 070 054 013	12	70	540	0/1	B13	278x175x190	18
L5	L5 090 070 013	12	90	700	0/1	B13	353x175x190	23,2
TRCT L	TRCT L 090 062 010	12	90	620	0/1	B00	344x175x225	24,7
TRCT L	TRCT L 115 076 010	12	115	760	0/1	B00	344x175x225	26,7
TRCT	TRCT 125 080 010	12	125	800	0/1	B00	344x173x275	29,4
A	A 130 088 313	12	130	880	3/1	B03	513x189x218	36
B	B 180 110 310	12	180	1100	3/1	B00	513x223x218	45,5
C	C 225 115 310	12	225	1150	3/1	B00	513x274x235	58,4

Global Batteries Ltd.

22 Demokratias Avenue, Agios Dhometios,
2370 Nicosia, Cyprus

Phone : +357 (992) 66 57 6

Web : www.globalbattery.net

e-mail : info@globalbattery.net

6500140-0116